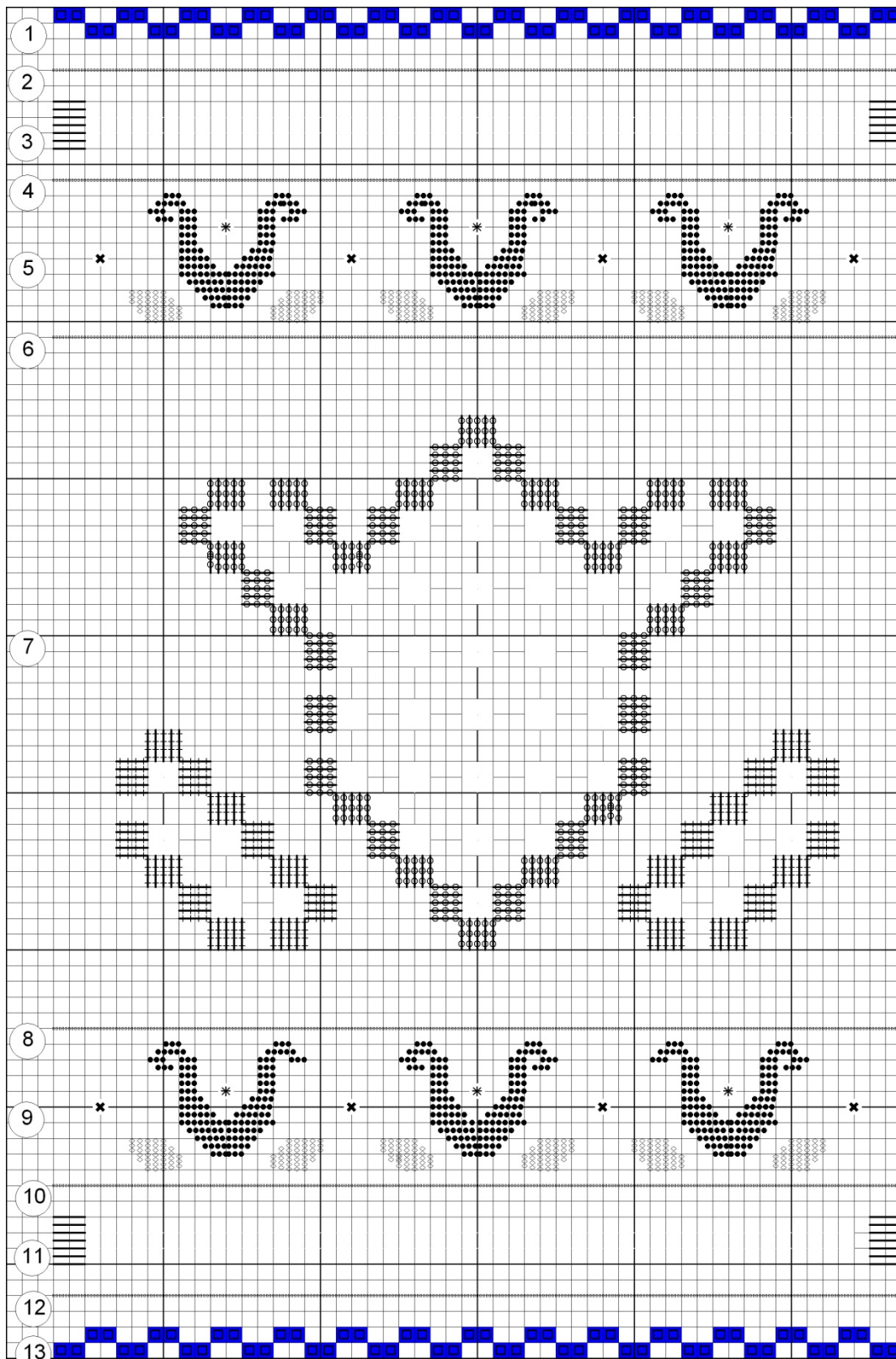




Kim Beamish

**INSTRUCTIONS BELOW**

# *Tulip Sampler*



## **Finished Dimensions**

3.4 x 5.3 inches (approximately)

## **Chart**

1 square = 2 x 2 threads

## **Materials**

32 ct cream Belfast linen

DMC Pearle Cotton #12, colour 712

Caron Wildflowers – Periwinkle, Jade, Blue Lavender, Flamingo

Caron Waterlilies – Flamingo, Jade

## **Stitches Used**

Cross Stitch, Holbein Stitch, Hem Stitch, French Knot, Satin Stitch, Kloster, Needle Weaving

## **Instructions**

Instructions will be described for each band (Bands are numbered on chart)

### **Band 1 and 13**

Using one strand of Caron Wildflowers Blue Lavender complete cross stitch as shown on chart

### **Band 2, 4, 6, 8, 10, 12**

Using one strand of Caron Wildflowers Periwinkle, complete Holbein Stitch as shown on chart.

### **Band 3 and 11**

Using DMC Pearle Cotton #12 complete sating stitches as shown on chart. Carefully remove threads. Using DMC #12, complete hem stitch both along the bottom grouping four threads across. Hem stitch along the top starting with one group of two threads and continuing with four threads so the gathering creates the V.

### **Band 5 and 9**

Using one Strand of Wildflowers Flamingo, complete satin stitch to create tulips. French knot inside tulips is completed with Flamingo. Using one strand of Wildflowers Jade, Complete the satin stitch for leaves as shown on chart. French knots between tulips are complete wrapping twice around needle using one strand of Wildflowers Blue Lavender.

### **Band 7**

Using chart and one strand Wildflowers Flamingo, Complete Kloster for large tulip. Using one strand of Jade, complete kloster for leaves. Carefully cut and remove threads between Kloster in both the tulip and leaves. Using two strand s of Caron Waterlilies Flamingo needle weave remaining threads. Using tow strands of Waterlilies Jade, needleweave the remaining threads in leaves.